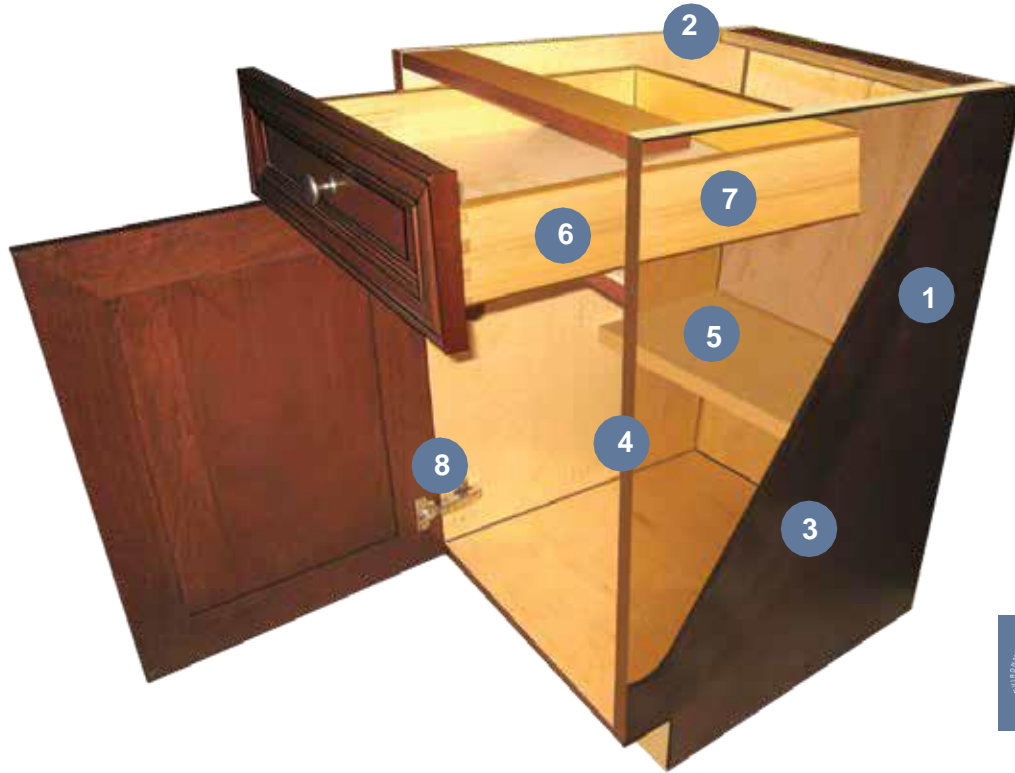


Semi-custom frameless construction



- 1 **Standard construction** consists of environmentally-friendly furniture board with an upgrade option to NAUF (No Added Urea-Formaldehyde) Plywood. All sides, tops, bottoms, stretchers and shelving are 3/4" thick with a 1/2" back panel fully captured on four sides.
- 2 **Cabinets are doweled** and glued before being assembled using an automated case clamp to ensure a rigid cabinet that is true and square.
- 3 **Furniture board interior** components and unfinished sides are covered with a choice of natural maple or white melamine; plywood components are clear finished wood veneers. Finished ends, interiors and panels are covered with wood veneer finished to match doors.
- 4 **Edges** are taped with complementary PVC edgebanding on the sides, tops and bottoms.
- 5 **Shelving** is full depth on wall cabinets, half depth on standard base cabinets and full depth on full door base cabinets.
- 6 **Drawer box and sliding shelf standard** are a 5/8" solid maple dovetail drawer with 1/4" plywood captured bottom.
- 7 **Slide standard** is Blumotion full extension with soft-close feature.
- 8 **Fully concealed Blum hinges** are a combination of a standard 110 degree quick release with a 110 degree integrated soft-close. Both have a 3-way cam adjustment.

Norwood Factory & Showroom

505 University Avenue
Norwood, MA 02062
781-949-8900

Metcabinet.com