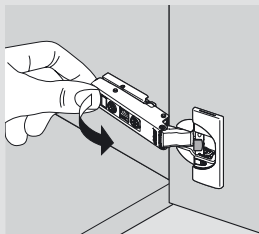


# CLIP top 110° angle restriction clip

## Assembly instructions

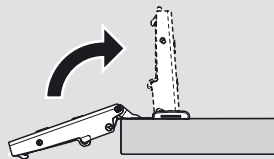
### Step 1 — Remove door

Remove hinge from CLIP mounting plate.



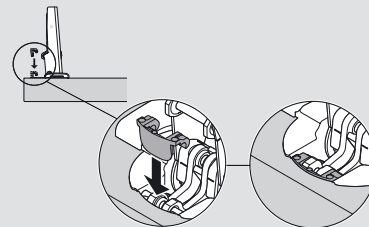
### Step 2 — Rotate hinge arm

Rotate hinge arm to closed position.



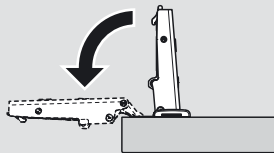
### Step 3 — Insert angle restriction clip

Insert angle restriction clip (70T3553) into base of hinge arm and secure.



### Step 4 — Rotate hinge arm

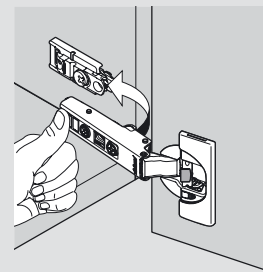
Rotate hinge arm to open position.



### Step 5 — Reattach door

Align door and reattach to CLIP mounting plate.

Restricts opening angle to 86°



**NOTE:** For use with all CLIP top 110° and 110°+ hinges (**this includes CLIP top BLUMOTION**)

Subject to technical modifications without notice. © 2011 Blum, Inc.

LIT.HNG5201.07.11

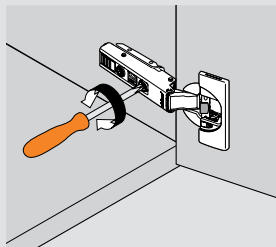
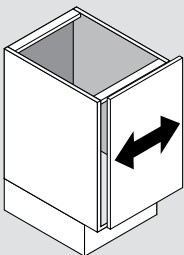
 **blum**<sup>®</sup>

# CLIP top BLUMOTION

## Three-dimensional adjustment

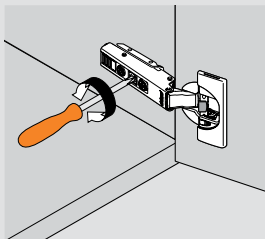
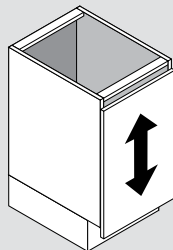
### Side adjustment

Rotate front screw to increase or decrease door overlay ( $\pm 2$  mm).



### Height adjustment

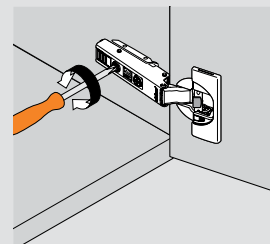
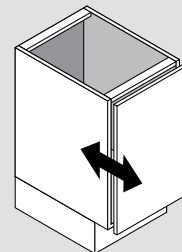
Rotate cam screw on mounting plate to adjust door position ( $\pm 2$  mm).



On non-cam mounting plates, loosen screws, adjust door and retighten screws.

### Depth adjustment

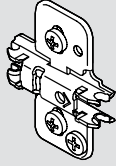
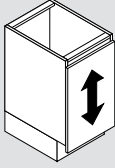
Rotate rear spiral tech cam screw to adjust door gap ( $+3$  mm,  $-2$  mm).



# CLIP mounting plate adjustments

## Height adjustment

### Cam wing mounting plate



Rotate cam screw on the mounting plate to adjust door position (+/- 2 mm).

